

www.englishlutheran.org  
office@englishlutheran.org  
608-784-9335  
1509 King Street  
La Crosse, WI 54601

January/February, 2022



# the *Voices* of english lutheran

The SEASON of EPIPHANY

## GOOD BYE FROM PASTOR GLEN

It has been 16 months since I started as your Senior Pastor. It's been a strange interim. No, not because of this church or its members. It's been strange because of COVID-19. Never in a church have I had less contact with members. I know most of you half as well as I would have liked, and some of you I hardly met at all. The ones I did meet I had a hard time recognizing and had to "meet again" with masks off (via Zoom) or vice versa. It's hard to make decisions without knowing members very well. But thankfully, livestream helped. You know me better through my sermons than I'd expected, and often treated me as if we knew each other well: a blessing.

"Where do you go from here?" is what most congregations like to ask at parting. I'm talking to a church in the St. Paul Synod, 40 minutes from home. Nothing is quite decided, so I won't say more now. There are many more churches needing experienced interims than there are pastors and I've already been approached by churches from several synods.

I will miss you all. Yours is a fabulous church. I believe you're getting a pastor who is a great fit. I have every confidence

*continues on page 2*

## We are Blessed to Welcome Pastor Mark Kvale!



At a special congregational meeting on Sunday, December 12, 2021, English Lutheran Church voted to call Pastor Mark Kvale as our next Senior Pastor.

He finds great joy in bearing witness to the love and faithfulness of Jesus Christ and helping and equipping all people, regardless of age or background, in growing into faithful disciples of Jesus.

Mark is married to Ann and they have three adult sons; Aaron, Jacob, and Caleb. Born in Viroqua, WI, Pastor Mark attended high school in Plymouth, WI. He graduated from Luther College (Decorah, IA) with degrees in Music Performance and Music Management. He attended Red Wing Technical College, studying band instrument repair. He received his Master of Divinity degree from Wartburg Theological Seminary in Dubuque, IA.

Since his ordination in 2005, Pastor Mark has served congregations in Wisconsin and Iowa: Blair Lutheran Parish, Blair, WI; Washington Prairie Lutheran Church, Decorah, Iowa; Trinity Lutheran Church, Sparta, WI.

Prior to responding to God's call to the ministry of Word and Sacrament, Mark repaired band instruments, taught percussion privately and at two colleges (Luther and Iowa Central Community College), and has played music professionally; from symphony orchestras, operas and ballets to jazz, rock, and yes, even polka!

He loves spending time with family and friends, baseball, getting behind a drum set, reading, and walking. And he loves being in God's creation, especially exploring the beauty of Montana.

IN CHRIST

We Welcome, Worship & Work

IN THE WORLD



## Worship Times

Saturday 5:00 p.m.

Sunday 8:30 a.m. and 10:45.

## New Piano FUNDRAISER

We will be kicking off the fundraiser for the new Yamaha semi-concert grand piano for our sanctuary at the worship services January 8 and 9.

There will be a large keyboard poster with all 88 keys posted in the Narthex. For specific dollar increments, individuals or groups can "purchase a key."

More details will be shared on January 8 and 9.



*Good Bye continued front page*

that you and your permanent pastor will be very happy doing God's work together.

One last remark. I make it a rule not to have much contact with folks for a year or so after I leave a place. It's not because I don't love you all- I do. But I don't want our relationship to be an impediment for the next pastor. After a year, we'll see; it is hard to keep up with all 20 of my congregations!

Blessings,  
Pastor Glen

## VAMOS A NICARAGUA!



Our intergenerational mission trip will be traveling to Nicaragua **August 13-19, 2022.**

We will be partnering with Praying Pelican Missions as our hosts.

All individuals 5th grade and older are welcome. Due to the delays in getting started, we will need a **commitment by the end of January for at least 10 people.** Hopefully we will have at least 15 going.

An informational meeting will be held January 5 at 5:30 p.m. However, if you are interested please reach out to [Irene@englishlutheran.org](mailto:Irene@englishlutheran.org) or by calling the church 608-784-9335, ext. 304 for more information or any questions you may have.

Please consider joining congregation members in this ministry opportunity!

Irene TenEyck,  
Director of Caring Ministries

## New Member Orientation and Faith Workshop

Are you or someone you know interested in becoming a member at English or simply want to learn a bit more about our church?

### Come to the Workshop

Sunday, February 6  
12:00 p.m. – 3:00 p.m.

*Lunch will be provided.*

New members will be received at the service of their choice on the weekend of February 12 and 13.

For questions or more information, please contact Carol Robertson at 608-784-9335 or [carol@englishlutheran.org](mailto:carol@englishlutheran.org)

## GIFTS, MEMORIALS AND PASTORAL ACTS

### UNDESIGNATED

*In Memory of:* Ron McKelvey  
by Chris Saudek and friends and family  
*In Memory of:* William Terry by Kent and Mary Sween and Kay Taylor  
*In Memory of:* Shirley Adams  
by Lou Wuensch  
*In Memory of:* Irene and Willard Sill  
by James Sill

### PIANO

*In Memory of:* Thelma Overholt  
by Mary Wisneski, Carol Taebel, Ruth Kuntz, and Harvey and Suzanne Bertrand

### BAPTISMS

11/07.....Emmy Lorraine, daughter  
of Michael and Allyson Borst  
11/14.....Ciarra Renae Morris,  
daughter of Alisha Merwin  
and Christa Morris  
11/28.....Alina Vesper Musolf,  
daughter of Chad and Gabriela

### DEATHS

07/03 .....Karen Sampson,  
funeral, 07/09  
07/06 .....Doris Bendiksen,  
funeral 07/13  
10/08 .....William "Bill" Terry,  
funeral 12/19  
11/30.....Thelma Overholt,  
funeral, 12/04

## Welcome Our New Members October 24

Thomas and Corin Davey, and children Ethan, Nolan, and Gavin, Carol Dobbs, Paul and Lori Moe, Alisha Merwin and Christa Morris and daughter Ciarra, Garrett and Carrie Zimmerman and children Graham and Finley



## P.A.C.K.

### 4th, 5th and 6th GRADES

Friday, January 28  
Friday, February 25  
6:30-8:30 p.m.

P.A.C.K. nights are an excellent way for our 4th-6th graders to come to church, play games, hang out with friends and learn about God's love!



The youth group sponsored and shopped for an Angel Tree family.

## Youth Nights

These are high energy, impactful nights that re-focus on lives towards God and help us to build relationships and have fun together! Come check it out!

### High School

Snow Tubing – Friday, January 21  
Lock-In – Friday, February 4  
More details to come

### 7th and 8th Grade

Friends, food, silly games, devotional time and of course Sandman make up the fun of our 7th-8th grade youth nights.

### Save these upcoming dates!

Sunday, January 23  
Sunday, February 20  
5:30-8:00 p.m.

## STEWARDSHIP UPDATE

2021 has been an unsettling year to say the least, and needs in the community seem to be growing ever greater, as has the cost of most things. Helping others these days is more challenging than it was just a year or so ago.

In the midst of this crazy year, English Lutheran continues its work for justice and peace. You heard about Habitat for Humanity, Hope Restores (La Crosse organization founded recently to help Black Americans), our various hunger ministries, and the exploration of becoming an RIC (Reconciling in Christ) congregation. RIC congregations are congregations which make a special effort to reach out to all minorities including those of sexual expression and make them feel welcome. Our Stewardship Campaign concluded with a dynamic sermon by Pastor Paul Sannerud on November 21.

You're responding to the campaign wonderfully! We will likely continue to be an even stronger presence for peace and justice in

the La Crosse area in 2022. As of December 13, 2021, there have been 171 estimate-of-giving cards turned in, 49 more than last year on the same date. These cards represent \$512,224 of estimates given, more than \$170,000 ahead of last year, again on the same date.

Last year the total amount estimated through giving cards was \$638,776, so we are closing in on that amount quickly. Now we don't know if some people are simply turning in their cards earlier than last year. Even so, we on Stewardship Committee are optimistic that we will have greater totals of card giving than last year, perhaps significantly more. Last year we received more than \$300,000 in giving cards after December 10, so it is too early to say what the final results for 2022 campaign will be.

Well done so far, English Lutheran! Keep it up!

### CHURCH OFFICE

main phone ..... 784-9335  
direct line..... 784-8876

### INTERIM SENIOR PASTOR

Pastor Glen Bickford.....ext 205  
[pastorglen@englishlutheran.org](mailto:pastorglen@englishlutheran.org)

### PASTOR

Pastor Becky Goche.....ext 301  
[pastorbecky@englishlutheran.org](mailto:pastorbecky@englishlutheran.org)

### DIRECTOR of CARING MINISTRIES

Irene TenEyck.....ext 304  
[irene@englishlutheran.org](mailto:irene@englishlutheran.org)

### DIRECTOR of DISCIPLESHIP

Niki Pohnl .....ext 204  
[niki@englishlutheran.org](mailto:niki@englishlutheran.org)

### DIRECTOR of YOUTH and FAMILY

Kristen Arends .....ext 207  
[kristen@englishlutheran.org](mailto:kristen@englishlutheran.org)

### DIRECTOR of MUSIC

Trevor DuPey .....ext 303  
[trevor@englishlutheran.org](mailto:trevor@englishlutheran.org)

### BELL CHOIR DIRECTOR

Jim Knutson..... 498-8829  
[jim@firstlu.org](mailto:jim@firstlu.org)

### ORGANIST/PIANIST

Eddie Kim  
Luke Thering

### WORSHIP TECHNOLOGY

Jarod Griswold  
[sanctuary@englishlutheran.org](mailto:sanctuary@englishlutheran.org)

### OFFICE MANAGER

Jennifer Jones .....ext 201  
[jennifer@englishlutheran.org](mailto:jennifer@englishlutheran.org)

### ADMINISTRATIVE ASSISTANT

Carol Robertson .....ext 202  
[carol@englishlutheran.org](mailto:carol@englishlutheran.org)

### BUILDING MAINTENANCE

Dane Melby  
[maintenance@englishlutheran.org](mailto:maintenance@englishlutheran.org)

RETURN SERVICE REQUESTED

## January/February

EPIPHANY

### OUR VISION

BY THE GRACE OF GOD,  
ENGLISH LUTHERAN CHURCH  
SHALL BE A HEALTHY,  
MISSION-FOCUSED  
CONGREGATION

*full of life*

608•784•9335

[www.englishlutheran.org](http://www.englishlutheran.org)

### NEW THIS YEAR



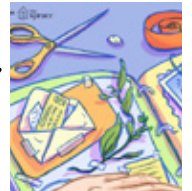
This is a celebration for all ages.

Come celebrate the Magi following the star to meet Jesus for themselves!

We'll follow our own stars, have a hot chocolate bar (like ice cream sundaes but hot chocolate!), play games and do some crafts.

*Hello Ladies,*

Crafter's Retreats are **back**



Sign up at the Welcome Center or email Niki at [niki@englishlutheran.org](mailto:niki@englishlutheran.org) to put you on the list.

Reminder: Need to know the number of tables you would like to reserve.

Dates: (2nd weekends of the month)  
January 14, 15, 16  
February 11, 12, 13  
March 11, 12, 13  
April 8, 9, 10

Feel free to pass this on to others you think might like to attend. Hope to see you there!

