

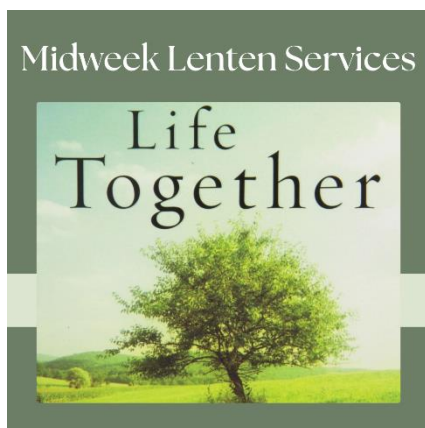
Welcome to worship!

March 20, 2024

Noon & 6:15pm



1509 King Street • La Crosse, WI 54601
608-784-9335 • office@englishlutheran.org



Pastoral Staff

Rev. Mark Kvale, Rev. Becky Goche

Ministers: All Baptized Members

Today's Worship Leaders

Production Leader: Jarod Griswold

Musician: Trevor DuPey

englishlutheran.org



ELW – red hymnal | ACS – purple hymnal

Prelude & Welcome to Worship

Gathering Song ELW #603 God, When Human Bonds are Broken

Lenten Litany (based on Psalm 133)

How very good and pleasant it is when kindred live together in unity!

It is like the precious oil on the head, running down upon the beard, on the beard of Aaron, running down over the collar of his robes.

It is like the dew of Hermon, which falls on the mountains of Zion. For there the LORD ordained THE blessing – life forevermore.

Help us, Lord, to live together in unity with all those around us.

Prayer

Lesson | James 5:13-20

Word of God, word of life. **Thanks be to God.**

Conversation & Reflection | Pastor Mark Kvale

"The pious community permits no one to be a sinner. Hence all have to conceal their sins from themselves and from the community. We are not allowed to be sinners. Many Christians would be unimaginably horrified if a real sinner were suddenly to turn up among the pious. So we remain alone with our sin, trapped in lies and hypocrisy, for we are in fact sinners."

*How do you define 'sin?'

*How do you think our society defines 'sin?'

"Now come, as the sinner that you are, to your God who loves you. For God wants you as you are, not desiring anything from you—a sacrifice, a good deed—but rather desiring you alone. . . The mask you wear in the presence of other people won't get you anywhere in the presence of God. God wants to see you as you are, wants to be gracious to you. You do not have to go on lying to yourself and to other Christians as if you were without sin. You are allowed to be a sinner. Thank God for that. . . In Christ, the love of God came to the sinner. In the presence of Christ human beings were allowed to be sinners, and only in this way could they be helped. Every pretense came to an end in Christ's presence. This was the truth of the gospel in Jesus Christ; the misery of the sinner and the mercy of God."

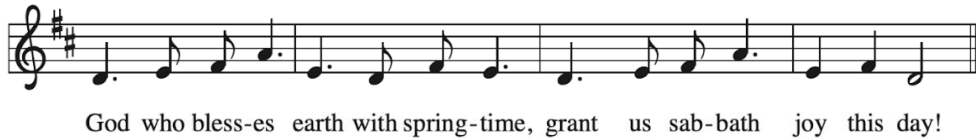
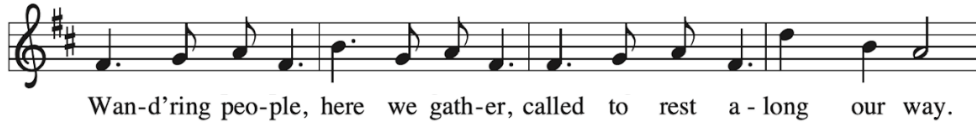
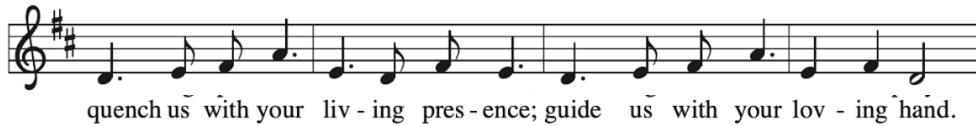
*What are the ways you 'wear a mask?'

*Have you ever experienced 'forgiveness? What was that like for you?'

Confession & Forgiveness | ELW Page 243

Special Music (6:15) | Abby Frost

Prayers of the People | ACS #924 As the Winter Days Grow Longer (vs 3 only)



Text: Mary Louise Bringle, b. 1953
Music: SŴŌ GŴN, Welsh melody
Text © 2006 GIA Publications, Inc., gnamusic.com. All rights reserved.

Prayers of the People:

Everyone sing Verse 3 all the way through.

We pray for the church...
Hear us, O Lord. **Sing the first line of Verse 3.**

We pray for the world...
Hear us, O Lord. **Sing the second line of Verse 3.**

We pray for the nations...
Hear us, O Lord. **Sing the third line of Verse 3.**

We pray for those in need...
Hear us O Lord. **Sing the fourth line of Verse 3.**

We remember... Hear us, O Lord. **Sing Verse 3 all the way through.**

Lord's Prayer

Lord, remember us in your kingdom and teach us to pray. **Our Father, who art in heaven, hallowed be thy name, thy kingdom come, thy will be done, on earth as it is in heaven. Give us this day our daily bread; and forgive us our trespasses, as we forgive those who trespass against us; and lead us not into temptation, but deliver us from evil. For thine is the kingdom, and the power, and the glory, forever and ever. Amen.**

Announcements

Benediction/Blessing

Amen.

Sending Song ELW #626 By Gracious Powers

Dismissal & Postlude

Go in peace. Share your bread. **Thanks be to God.**

WORSHIP SERVICES | Saturdays at 5:00pm, and Sundays at 8:30 & 10:45am.

STAFFED NURSERY | Available on Sunday mornings and Wednesday evenings.

EDUCATION OPPORTUNITIES | School year at 9:45am on Sundays, throughout the week for all ages.

GIVE ONLINE | Visit englishlutheran.org/onlinegiving, use the QR code, download the Vanco Mobile Faith app, or text an amount (no decimal point or dollar sign) to 855.929.1663.



OFFERING can be left in the plate at the back of the sanctuary.

OUR MISSION STATEMENT: In Christ, we welcome, worship and work in the world.

OUR WELCOME STATEMENT: The faith community of English Lutheran Church is rooted in Christ and committed to living life generously.

We celebrate diversity of sexual orientation, gender identity, race, ethnicity, age, economic status, marital status, physical or mental ability.

We are united in the Holy Spirit as we embrace our differences. We welcome all as we strive to be a community equipped for God's mission in the world.

We invite you to join us as we seek to promote racial equity, social and economic justice, and care for our environment.

Wherever you are on your faith journey, there is a place for you here.